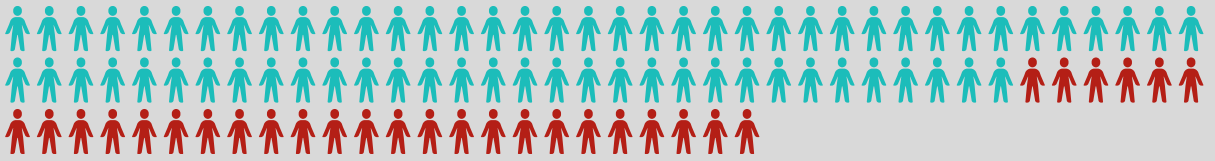




Olds and District HOSPICE SOCIETY

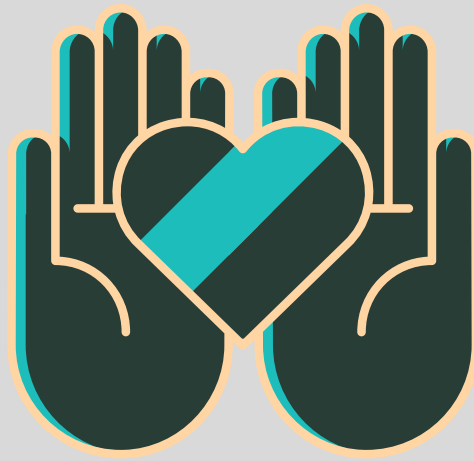
95%

OCCUPANCY RATE IN OUR 2
COMMUNITY HOSPICE SUITES
JUMPED FROM 40% IN 2019-
2020 TO 95% WITH A WAITING
LIST IN 2021-2023



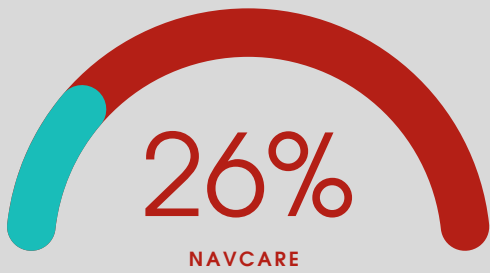
Clients we have been able to support vs clients on the waitlist for 24/7 suite assistance that could not access the community hospice suites

"Helping people
with life-limiting
illness live well till
their last breath"
Supporting families
cope with grief
and bereavement



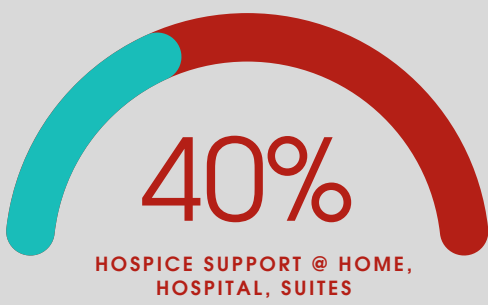
[Information Base](#) [Contact Base](#) [Volunteers](#) [Communication](#)

CLIENT PERCENTAGE OF SOCIETY OPERATIONS BY PROGRAM



NAVCARE

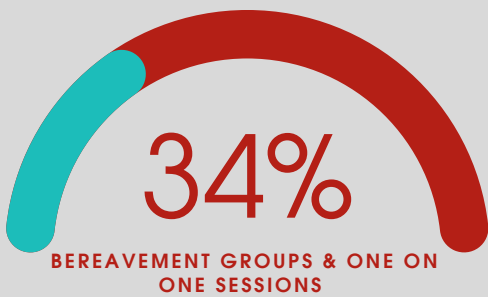
Specially trained volunteer navigators help improve the lives of people living with chronic/terminal illness by creating connections to community services and resources and providing caring, compassionate emotional and social support.



HOSPICE

We support Individuals facing an end-of-life journey in the home or at the hospital through volunteer support.

The Society also works in a tri-partnership model with Season's Encore, and Alberta Health Services to provide two 24/7 hour palliative care hospice suites located in Olds.



BEREAVEMENT

We believe sincerely in the importance of continuing support through the grief journey.

We offer this through bereavement support groups offered twice a year, as well as one-on-one support.



Hike for Hospice supports palliative care in your local neighborhood, it kicks off Palliative Care Week the first weekend of May annually

• **Services are free of charge**



Olds and District
**HOSPICE
SOCIETY**

To Make a Donation

Please make cheques payable to
Olds & District Hospice Society

Date _____

Name _____

Address _____

City _____

Province/Postal Code _____

Email _____

Phone _____

In Memory _____

Other ways to support:

Volunteer time

Donate items to Nu2u

Planned giving

Event sponsorship

Office: 403-586-9992

Email: ed@hospiceolds.com

Registered Charity # **835177403**

Mail to: Box 4231, Olds AB T4H 1P8